

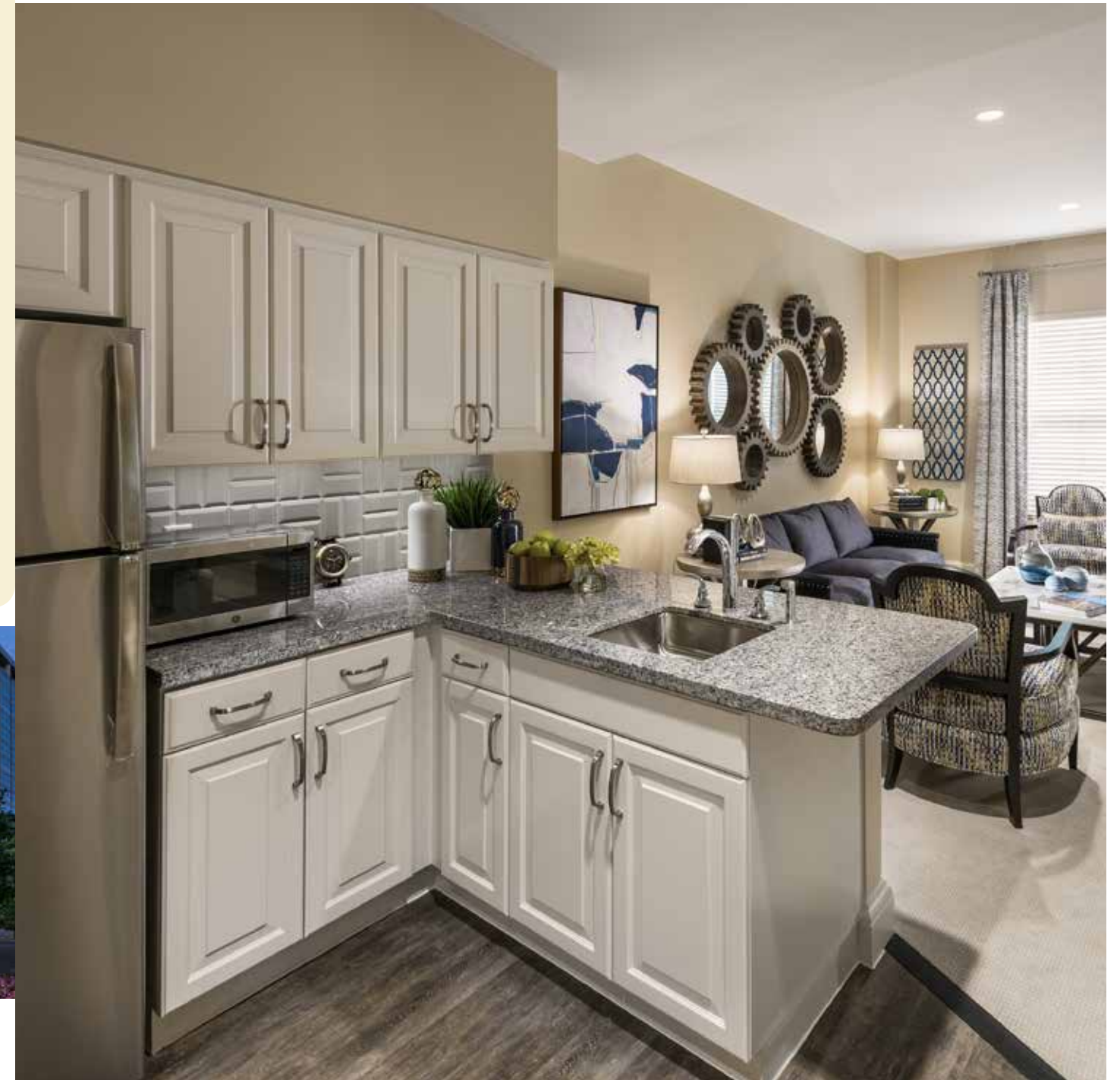
SERVICES

Caring, trained staff, including nurses, available 24 hours per day
Dynamic calendar of programs, outings and Watermark University classes and Extraordinary Outings
Personalized Assisted Living, The Bridge (mild cognitive support) and Memory Care
Delicious and healthy meals prepared by our in-house expert chefs
Concierge services
Housekeeping, linen and laundry services
Complete apartment maintenance services, including plumbing and major appliances
Preventive health screenings and education programs
Full-service salon and spa
Scheduled local transportation services with personal drivers
Complimentary valet parking service and underground parking
Best Move move-in coordination service

AMENITIES

Spacious outdoor terraces with comfortable lounging spaces and breathtaking city views
Full-service, formal restaurant and dining room in Signatures Restaurant
Casual dining in Blue Lacey Grill
Café dining in Sherry Lane Bistro
Full bar and lounge at Craddock's where friends and family can mingle and enjoy signature cocktails
Open kitchen concept with wood-fired gourmet pizza oven
Private dining room available for catered events
Room service and catering services
In-house sommelier and elegant wine room for wine tastings
Elegant common spaces and gathering areas, with spacious community rooms
Card, game, billiards and art studio
Tea room
Wellness and fitness center with private elevator access
Pet-friendly environment

JUST THE FACTS



THE PRESTON
OF THE PARK CITIES

Elegant Boutique Living

5917 Sherry Lane • Dallas, TX 75225
469-904-1394 • watermarkcommunities.com
A SILVERSTONE/WATERMARK RETIREMENT COMMUNITY

ID #149863

ASSISTED LIVING • MEMORY CARE



THE PRESTON OF THE PARK CITIES

TOTAL RESIDENCES	134
Assisted Living	91
The Bridge	14
Memory Care	29
CONTRACT TYPE	Rental



A PLACE FOR YOU

Discover an intimate, vibrant, friendly and supportive lifestyle in an elegant boutique-like setting, and enjoy 24-hour staffing and outstanding care in our **Assisted Living** and **Memory Care** neighborhoods.

Comfortable shared spaces invite you to **relax, rejuvenate** and **connect**. From our spacious outdoor terraces and patios with comfortable lounging spaces, full-service salon and spa to our in-house sommelier and elegant wine tasting room, card, game and craft rooms, spacious community rooms, and wellness and fitness center, our **spaces encourage fun and friendship**.

AN OPTION FOR EVERY APPETITE

Wellness starts from within, and our ever-changing menus feature an array of **fresh, flavorful and nutritious choices** that will delight every palate, with daily specials prepared to order by our expert chefs, seasonal dishes and comfort food favorites. Meet friendly neighbors in our **contemporary dining room**, where you'll enjoy gracious service and impeccable attention to detail.

If you prefer a cozy night in with a good book, order your favorites from **room service**, or **cater a party** in our private, elegant dining area.

A FULL LIFE

Explore current interests, and discover new ones when you choose from dozens of art events, concerts, outings, and **classes through Watermark University** taught by associates, residents and expert guests. Keep your mind and body fit in our state-of-the-art fitness center, featuring an on-site physical therapist and various wellness programs. It's all part of our lifestyle and our abundance of choices.

Treat yourself to a signature service like a relaxing message in our **full-service salon and spa**.

LET US DO THE WORK

With our stress-free move-in coordination program, you'll be right at home in no time, with maintenance and housekeeping at your service 24 hours a day. Keep your car in our private underground parking, and leave the driving to us with our **scheduled transportation services**. Enjoy the days as they unfold knowing that your **concierge and caring team of associates will take care of all the details**.



ASSISTED LIVING

Bright, cheerful apartments with modern, designer kitchenette

Choice of spacious studio, one-bedroom or two-bedroom residences, some with private terraces

Three delicious and healthy meals prepared-to-order by our celebrated expert chefs, in addition to snacks

Weekly housekeeping services

Caring, trained staff available 24 hours per day, including 24/7 nursing staff

Private and group transportation service to shopping, appointments and entertainment

All utilities except phone service

Maintenance services

Dynamic calendar of programs, classes and Extraordinary Outings including Watermark University classes

Wellness and fitness center featuring a variety of senior wellness programs

Individual wellness plans reviewed monthly

Resident emergency response system (additional fee)

On-site Memory Care

The Bridge (mild cognitive support)

Choice of spacious private or shared studios and one-bedroom residences

Weekly housekeeping, linen and laundry services

Complete apartment maintenance services

24-hour nursing staff

Three nutritious, well-balanced, family-style meals prepared to order by our celebrated expert chefs, where families and friends are welcome

Healthy and delicious snacks available at all times

Dynamic calendar of events, including Watermark University classes designed for individuals with mild cognitive needs

Structured and spontaneous programs specifically tailored to each resident

Individual wellness plans reviewed monthly

Extraordinary Outings

All utilities excluding phone service

Family communications center

Family support groups and happy hours



MEMORY CARE AT THE GARDENS

Choice of spacious private or shared studios and one-bedroom residences

Weekly housekeeping, linen and laundry services

Complete apartment maintenance services

24-hour staffing with specially trained Memory Care experts with certification through the National

Council of Certified Dementia Practitioners (NCCDP)

24-hour nursing staff

Three nutritious, well-balanced, family-style meals prepared to order by our celebrated expert chefs, where families and friends are welcome

Healthy and delicious snacks available at all times

Pantry Program for each resident's favorite foods

Dynamic calendar of events, including Watermark University classes designed for individuals with Memory Care needs

Structured and spontaneous programs specifically tailored to each resident

Individual wellness plans reviewed monthly

Extraordinary Outings that you would never expect in a Memory Care community

Warm, friendly environment with personal photographs, keepsakes and family histories

All utilities excluding phone service

Family communications center

Family support groups and happy hours